

BOHEMIA EDITION

Crossroads

A vibrant quilt panel featuring a central starburst design. The starburst is composed of yellow, orange, and floral patterned squares, surrounded by a wide border of pink and white squares. The background is a solid pink color.

XXXXXXXXXXXXXXXXXXXX



BOHEMIA EDITION

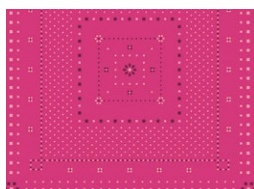
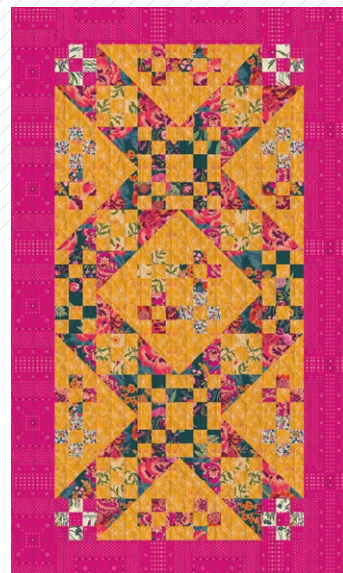
Crossroads

TABLE RUNNER

PROJECT DESIGNED BY AGFstudio

THE CUR8TOR | *Bohemia*

FABRICS DESIGNED BY AGF STUDIO



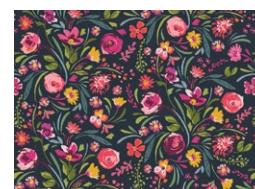
Fabric A
Binding
CUR8BH101
HANDKERCHIEF FUCHSIA



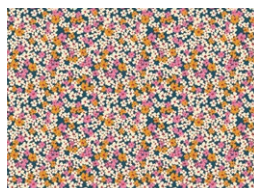
Fabric B
Backing
CUR8BH107
PARAKEET PARADISE



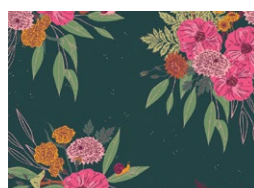
Fabric C
CUR8BH104
BOHEMIAN ENIGMA



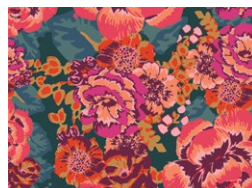
Fabric D
CUR8BH102
GRACEFUL BLOOMS



Fabric E
CUR8BH103
RETRO PRAIRIE MIRAGE



Fabric F
CUR8BH106
MOON FOREST ECHOES



Fabric G
CUR8BH100
ACQUA DI ROSE MYSTIC



Fabric H
CUR8BH105
BOHO STITCHES AMBER

BOHEMIA EDITION

Crossroads

TABLE RUNNER

FINISHED SIZE | 24½" x 41½"

FABRIC REQUIREMENTS

Fabric A	CUR8BH101	⅝ yd.
Fabric B	CUR8BH107	⅓ yd.
Fabric C	CUR8BH104	⅓ yd.
Fabric D	CUR8BH102	⅓ yd.
Fabric E	CUR8BH103	⅓ yd.
Fabric F	CUR8BH106	⅓ yd.
Fabric G	CUR8BH100	½ yd.
Fabric H	CUR8BH105	¾ yd.

BACKING FABRIC
CUR8BH107 1½ yds (Suggested)

BINDING FABRIC
Fabric **A** CUR8BH101 (Included)

CUTTING DIRECTIONS

¼" seam allowances are included.
WOF means width of fabric.

Fabric A

- Cut 2 (two) 3½" x 41½ strips.
- Cut 1 (one) 3" x WOF strip; then,
 - Sub-cut 2 (two) 3" x 18½" strips.
- Cut 1 (one) 1½" x WOF strip.
- Cut 4 (four) 2½" x WOF strips. (Binding)

CUTTING DIRECTIONS

¼" seam allowances are included.
WOF means width of fabric.

Fabric B

- Cut 1 (one) 1½" x WOF strip.

Fabric C

- Cut 2 (two) 1½" x WOF strips.

Fabric D

- Cut 1 (one) 1½" x WOF strip.

Fabric E

- Cut 1 (one) 1½" x WOF strip.

Fabric F

- Cut 1 (one) 1½" x WOF strip.

Fabric G

- Cut 1 (one) 7¾" x WOF strip; then,
 - Sub-cut 4 (four) 7¾" squares.
- Cut 2 (two) 1½" x WOF strips.

Fabric H

- Cut 1 (one) 7¾" x WOF strip; then,
 - Sub-cut 4 (four) 7¾" squares.
- Cut 10 (ten) 1½" x WOF strips.

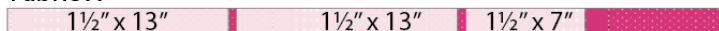
CONSTRUCTION

Sew all rights sides together with $\frac{1}{4}$ " seam allowance.

Block 1

- Take one (1) $1\frac{1}{2}$ " x WOF strip from fabric **A** and sub cut it into three (3) strips: two (2) measuring $1\frac{1}{2}$ " x 13", and one (1) measuring $1\frac{1}{2}$ " x 7".
- Repeat the same for fabric **B** strip but this time cut one (1) $1\frac{1}{2}$ " x 13" strips and two (2) $1\frac{1}{2}$ " x 7" strip.

Fabric A



Fabric B



DIAGRAM 1

- Take two (2) $1\frac{1}{2}$ " x 13" strip from fabric **A** and one (1) $1\frac{1}{2}$ " x 13" strips from fabric **B** and join them in the following order: **A-B-A**.



DIAGRAM 2

- Cut eight (8) strips of $1\frac{1}{2}$ " width following the diagram below.

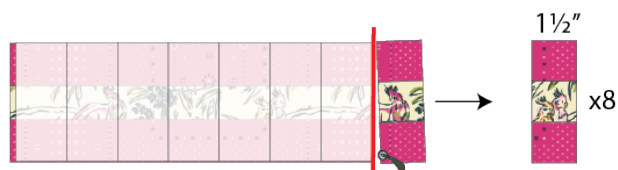


DIAGRAM 3

- Take one (1) $1\frac{1}{2}$ " x 7" strip from fabric **A** and two (2) $1\frac{1}{2}$ " x 7" strips from fabric **B** and join them in the following order: **B-A-B**.



DIAGRAM 4

- Cut eight (8) strips of $1\frac{1}{2}$ " width following the diagram below.

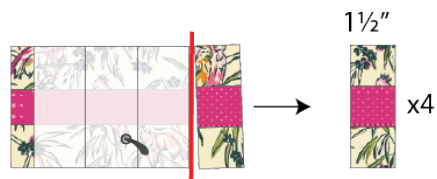


DIAGRAM 5

- Take two (2) **ABA** strips and one (1) **BAB** strip and join them following the diagram below.
- Repeat three (3) more times in order to have a total of four (4) Block 1.

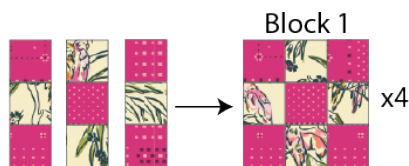


DIAGRAM 6

Block 2

- Take two (2) $1\frac{1}{2}$ " x WOF strip from fabric **C** and sub cut three (3) strips: one (1) measuring $1\frac{1}{2}$ " x 28" strip, and two (2) measuring $1\frac{1}{2}$ " x 14" strips.
- Take two (2) $1\frac{1}{2}$ " x WOF strips from fabric **H** and cut two (2) $1\frac{1}{2}$ " x 28" strips and one (1) $1\frac{1}{2}$ " x 14" strip.

Fabric C



Fabric H

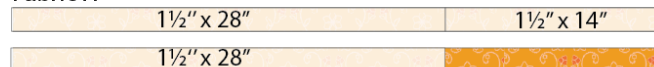


DIAGRAM 7

- Take one (1) $1\frac{1}{2}$ " x 28" strip from fabric **C** and two (2) $1\frac{1}{2}$ " x 28" strips from fabric **H** and join them in the following order: **H-C-H**.



DIAGRAM 8

- Cut eighteen (18) strips of $1\frac{1}{2}$ " width following the diagram below.

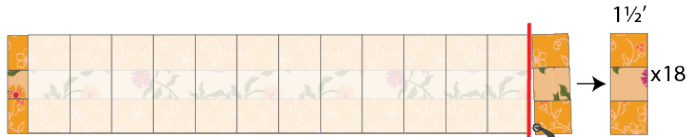


DIAGRAM 9

- Take two (2) $1\frac{1}{2}$ " x 14" strip from fabric **C** and one (1) $1\frac{1}{2}$ " x 14" strips from fabric **H** and join them in the following order: **C-H-C**



DIAGRAM 10

- Cut nine (9) strips of $1\frac{1}{2}$ " width following the diagram below.

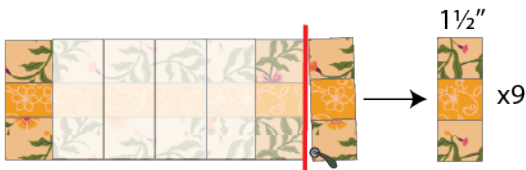


DIAGRAM 11

- Take two (2) **HCH** strips and one (1) **CHC** strip and join them following the diagram below.
- Repeat eight (8) more times in order to have a total of nine (9) Block 2.

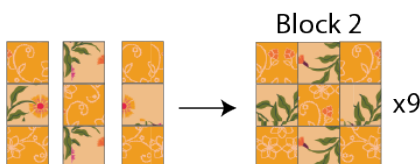


DIAGRAM 12

Block 3

- Take one (1) $1\frac{1}{2}$ " x WOF strip from fabric **D** and sub cut three (3) strips: one (1) measuring $1\frac{1}{2}$ x 19", and two (2) measuring $1\frac{1}{2}$ x 10".
- Take two (2) $1\frac{1}{2}$ " x WOF strips from fabric **H** and cut two (2) $1\frac{1}{2}$ x 19" strips and one (1) $1\frac{1}{2}$ x 10" strip.

Fabric D



Fabric H



DIAGRAM 13

- Take one (1) $1\frac{1}{2}$ x 19" strip from fabric **D** and two (2) $1\frac{1}{2}$ x 19" strips from fabric **H** and join
- them in the following order: **H-D-H**



DIAGRAM 14

- Cut twelve (12) strips of $1\frac{1}{2}$ " width following the diagram below.



DIAGRAM 15

- Take two (2) $1\frac{1}{2}$ " x 10" strips from fabric **D** and one (1) $1\frac{1}{2}$ " x 10" strip from fabric **H** and join them in the following order: **D-H-D**.



DIAGRAM 16

- Cut six (6) strips of 1½" width following the diagram below.



DIAGRAM 17

- Take two (2) **HDH** strips and one (1) **DHD** strip and join them following the diagram below.
- Repeat five (5) more times in order to have a total of six (6) Block 3.

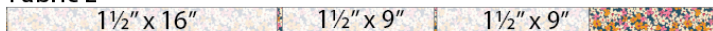


DIAGRAM 18

Block 4

- Take one (1) 1½" x WOF strip from fabric **E** and sub cut three (3) strips: one (1) measuring 1½" x 16", and two (2) measuring 1½" x 9"
- Take one (1) 1½" x WOF strip from fabric **H** and cut two (2) 1½" x 16" strips and one (1) 1½" x 9" strip.

Fabric E



Fabric H



DIAGRAM 19

- Take one (1) 1½" x 16" strip from fabric **E** and two (2) 1½" x 16" strips from fabric **H** and join them in the following order: **H-E-H**.



DIAGRAM 20

- Cut ten (10) strips of 1½" width following the diagram below.

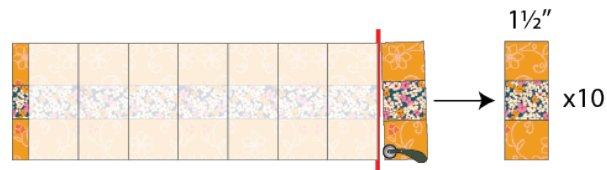


DIAGRAM 21

- Take two (2) 1½" x 9" strips from fabric **E** and one (1) 1½" x 9" strip from fabric **H** and join them in the following order: **E-H-E**.



DIAGRAM 22

- Cut five (5) strips of 1½" width following the diagram below.

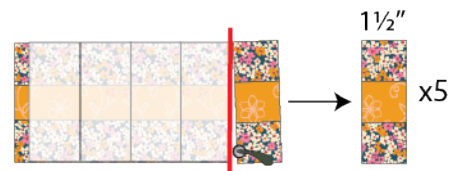


DIAGRAM 23

- Take two (2) **HEH** strips and one (1) **EHE** strip and join them following the diagram below.
- Repeat four (4) more times in order to have a total of five (5) Block 4.

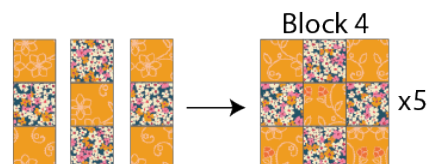


DIAGRAM 24

Block 5

- Take one (1) $1\frac{1}{2}$ " x WOF strip from fabric **F** and sub cut it two three strips: one (1) measuring $1\frac{1}{2}$ " x 19", and two (2) measuring $1\frac{1}{2}$ " x 10".
- Take two (2) $1\frac{1}{2}$ " x WOF strips from fabric **H** and cut two (2) $1\frac{1}{2}$ " x 19" strips and one (1) $11\frac{1}{2}$ " x 10" strip.

Fabric F



Fabric H



DIAGRAM 25

- Take one (1) $1\frac{1}{2}$ " x 19" strip from fabric **F** and two (2) $1\frac{1}{2}$ " x 19" strips from fabric **H** and join them in the following order: **H-F-H**.



DIAGRAM 26

- Cut twelve (12) strips of $1\frac{1}{2}$ " width following the diagram below.

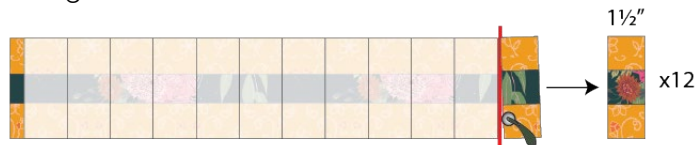


DIAGRAM 27

- Take two (2) $1\frac{1}{2}$ " x 10" strips from fabric **F** and one (1) $1\frac{1}{2}$ " x 10" strip from fabric **H** and join them in the following order: **F-H-F**.



DIAGRAM 28

- Cut six (6) strips of $1\frac{1}{2}$ " width following the diagram below.



DIAGRAM 29

- Take two (2) **HFH** strips and one (1) **FHF** strip and join them following the diagram below.
- Repeat five (5) more times in order to have a total of six (6) Block 5.

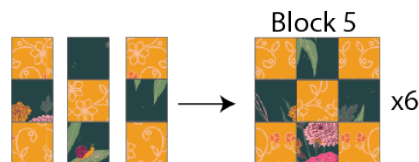
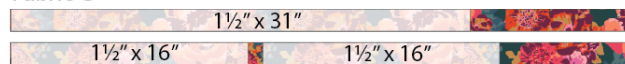


DIAGRAM 30

Block 6

- Take two (2) $1\frac{1}{2}$ " x WOF strips from fabric **G** and sub cut three (3) strips: one (1) measuring $1\frac{1}{2}$ " x 31", and two (2) measuring $1\frac{1}{2}$ " x 16".
- Take three (3) $1\frac{1}{2}$ " x WOF strips from fabric **H** and cut two (2) $1\frac{1}{2}$ " x 31" strips and one (1) $1\frac{1}{2}$ " x 16" strip.

Fabric G



Fabric H



DIAGRAM 31

- Take one (1) $1\frac{1}{2}$ " x 31" strip from fabric **G** and two (2) $1\frac{1}{2}$ " x 31" strips from fabric **H** and join them in the following order: **H-G-H**.

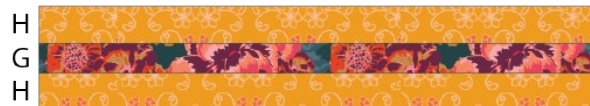


DIAGRAM 32

- Cut twenty (20) strips of $1\frac{1}{2}$ " width following the diagram below.

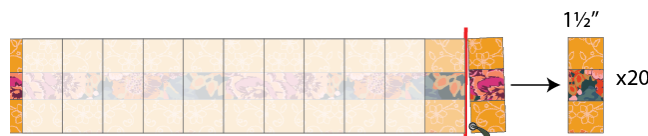


DIAGRAM 33

- Take two (2) $1\frac{1}{2}$ " x 16" strips from fabric **G** and one (1) $1\frac{1}{2}$ " x 16" strip from fabric **H** and join them in the following order: **G-H-G**.



DIAGRAM 34

- Cut ten (10) strips of $1\frac{1}{2}$ " width following the diagram below.

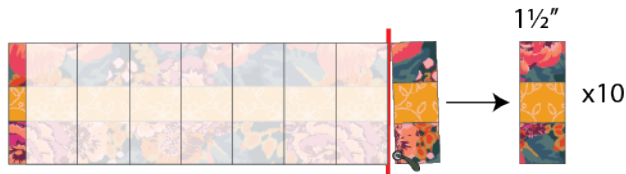


DIAGRAM 35

- Take two (2) **HGH** strips and one (1) **GHG** strip and join them following the diagram below.
- Repeat nine (9) more times in order to have a total of ten (10) Block 6.

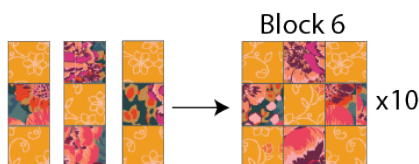


DIAGRAM 36

Magic 8 Half Square Triangle Method

- Place one (1) $7\frac{3}{4}$ " square from fabrics **G** and **H**, right sides together.
- Draw a line diagonally from corner to corner using a mechanical pencil or frixion pen.



DIAGRAM 37

- Stitch at a SCANT $\frac{1}{4}$ " on each side of the drawn lines.

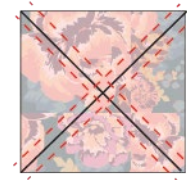


DIAGRAM 38

- Cut the squares vertically and horizontally.

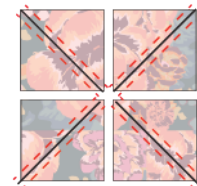


DIAGRAM 39

- Cut the squares diagonally from corner to corner.

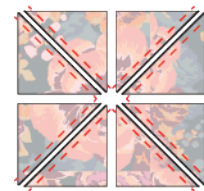


DIAGRAM 40

- Trim each HST to $3\frac{1}{2}$ " square. You will have a total of (8) HST units

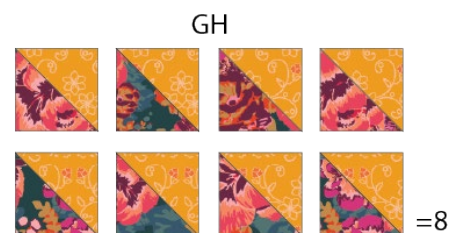


DIAGRAM 41

- Repeat the same process three (3) more times to have a total of thirty two (32) **GH** HST Units.



DIAGRAM 42

QUILT TOP

- Gather your blocks and your HST's and follow the diagram below for each row assembly.



DIAGRAM 43

- Sew rows 1-12



DIAGRAM 44

- Take two (2) 3" x 18½" strips from fabric **A** and join one on the top and one on the bottom of the assembled piece.



DIAGRAM 45

- Take two (2) 3½" x 41½" strips from fabric **A** and join one on the left side and one on the right side of the assembled piece.



DIAGRAM 46

- Quilt as desired.



DIAGRAM 47

QUILT ASSEMBLY

Sew rights sides together.

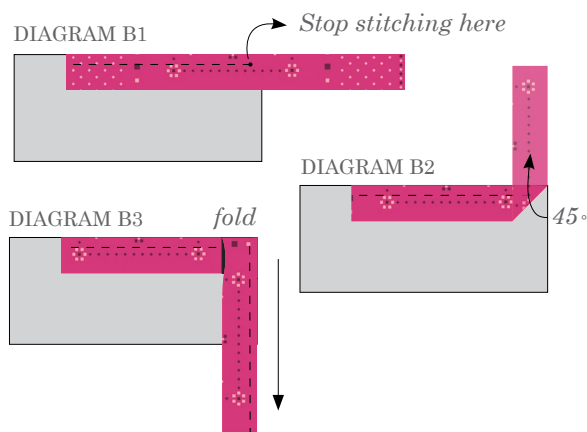
- Place BACKING FABRIC on a large surface wrong side up. Stretch it with masking tape against that surface.
- Place BATTING on top of backing fabric.
- Place TOP on top of the batting with right side facing up. Smooth away wrinkles using your hands.
- Pin all layers together and baste with basting thread, using long stitches. You can also use safety pins to join the layers.
- Machine or hand quilt starting at the center and working towards the corners. Remember that quilting motifs are a matter of personal preference. Have fun choosing yours!
- After you finished, trim excess of any fabric or batting, squaring the quilt to proceed to bind it.

BINDING

Sew rights sides together.

- Sew four (4) 2½" x WOF strips from fabric **A** to make a final strip 142" long. Start sewing the binding strip in the middle of one of the sides of the quilt, placing the strip right side down and leaving an approximated 5" tail. Sew with ¼" seam allowance (using straight stitch), aligning the strip's raw edge with the quilt top's raw edge.
- Stop stitching ¼" before the edge of the quilt (DIAGRAM B 1). Clip the threads. Remove the quilt from under the machine presser foot. Fold the strip in a motion of 45° and upward, pressing with your fingers (DIAGRAM B2). Hold this fold with your finger, bring the strip down in line with the next edge, making a horizontal fold that aligns with the top edge of the quilt (DIAGRAM B3). Start sewing at ¼" of the border, stitching all the layers. Do the same in the four corners of the quilt.

- Stop stitching before you reach the last 5 or 6 inches. Cut the threads and remove the quilt from under the machine presser foot. Lay the loose ends of the binding flat along the quilt edge, folding the ends back on themselves where they meet. Press them together to form a crease. Using this crease as the stitching line, sew the two open ends of the binding with right sides together (you can help yourself marking with a pencil if the crease is difficult to see).
- Trim seam to ¼" and press open. Complete the sewing. Turn binding to back of the quilt, turn raw edge inside and stitch by hand using blind stitch.
- If you are using our 2.5 edition (binding fabric), click or scan this QR code to see a tutorial on how to use this specialty fabric.



XXXXXXXXXXXXXXXXXXXXXXXXXXXXXXXXXXXX

*Congratulations
& enjoy*

XXXXXXXXXXXXXXXXXXXXXXXXXXXXXXXXXXXX



artgalleryfabrics.com

NOTE: While all possible care has been taken to ensure the accuracy of this pattern, We are not responsible for printing errors or the way in which individual work varies.

Please read instructions carefully before starting the construction of this quilt. If desired, wash and iron your fabrics before starting to cut.

© 2025 Courtesy of Art Gallery Quilts LLC. All Rights Reserved.